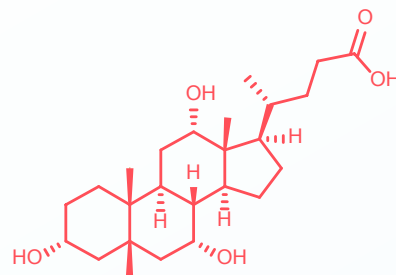




# Bile Acid Panel



## Bile Acids

Bile acids are derived from cholesterol and serve an important role in emulsifying and digesting lipids. In addition, their metabolism is intimately involved with the microbiota and they have been shown to exhibit endocrine and metabolic activity via receptors like FXR and TGR5.

The **Bile Acid Panel** measures all of the major human and rodent primary and secondary bile acids as well as their glycine and taurine conjugates.

## Applications

- ▶ Drug development for the treatment of fatty liver disease (e.g. FXR receptor agonists)
- ▶ Liver diseases
- ▶ Biopharmaceutical modulation of the host microbiome
- ▶ Basic microbiome research

Bile Acid Panel	LLOQ*	
	Serum/ Plasma	Feces
Cholic Acid	2.5 ng/mL	0.25 ng/mg
Chenodeoxycholic Acid	5.0 ng/mL	0.50 ng/mg
Deoxycholic Acid	5.0 ng/mL	0.50 ng/mg
Lithocholic Acid	2.5 ng/mL	0.25 ng/mg
Ursodeoxycholic Acid	5.0 ng/mL	0.50 ng/mg
Glycocholic Acid	2.5 ng/mL	0.25 ng/mg
Glychenodeoxycholic Acid	5.0 ng/mL	0.50 ng/mg
Glycodeoxycholic Acid	2.5 ng/mL	0.25 ng/mg
Glycoursodeoxycholic Acid	5.0 ng/mL	0.50 ng/mg
Taurocholic Acid	2.5 ng/mL	0.25 ng/mg
Taurochenodeoxycholic Acid	5.0 ng/mL	0.50 ng/mg
Taurodeoxycholic Acid	5.0 ng/mL	0.50 ng/mg
Taurolithocholic Acid	2.5 ng/mL	0.25 ng/mg
Tauroursodeoxycholic Acid	2.5 ng/mL	0.25 ng/mg
Glycolithocholic Acid	2.5 ng/mL	0.25 ng/mg

### Additional Bile Acids in Rodent Samples:

Alpha-Muricholic Acid	2.5 ng/mL	0.25 ng/mg
Beta-Muricholic Acid	2.5 ng/mL	0.25 ng/mg
Omega-Muricholic Acid	2.5 ng/mL	0.25 ng/mg
Gamma-Muricholic Acid	2.5 ng/mL	0.25 ng/mg
Tauro Alpha-Muricholic Acid	10 ng/mL	1.0 ng/mg
Tauro Beta-Muricholic Acid	10 ng/mL	1.0 ng/mg

\*Lower Limit of Quantitation (LLOQ) varies for each sample type

The panel is for non-GxP testing and is not for diagnostic use

### Analysis Method and Instrumentation

LC-MS/MS (Agilent 1290 UHPLC/Sciex QTrap 6500 or 6500+

### Sample Type and Required Amounts

Sample Type	Sample Requirement
Feces (wet weight)	200 - 500 mg
Plasma/Serum	100 - 150 µL
Tissue (liver)	200 - 500 mg

Others on request

Contact us to get started

[info@metabolon.com](mailto:info@metabolon.com)

+1 (919) 572-1711

[metabolon.com](http://metabolon.com)

617 Davis Drive, Suite 100, Morrisville, NC, 27560

© 2021 Metabolon, Inc. All rights reserved. TA.BAP.211111